

Solving Compound "AND" Inequalities

Clear Learning Target

You will be able to solve and graph compound inequalities involving an "and" relationship

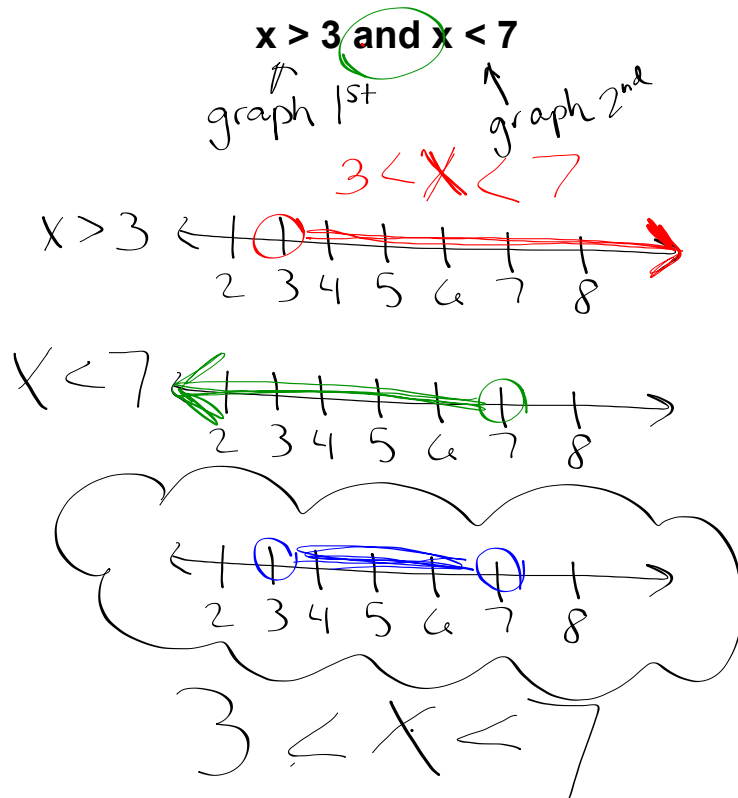
Words Worth Knowing!

Compound inequality -

two inequalities which are considered together

intersection - where the graphs of 2 inequalities overlap

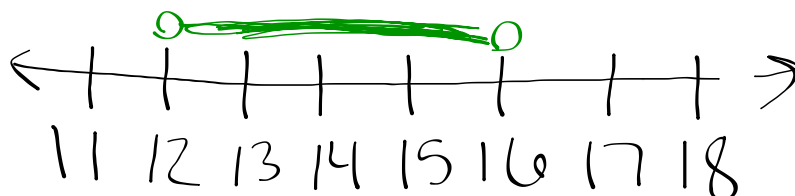
Example #1: Graph and rewrite the inequality.



You Try! Graph and rewrite the inequality.

$$12 < p \text{ and } p < 16$$

$$12 < p < 16$$

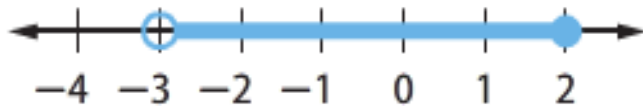


Example #2: Write a compound inequality for the given graph.



$$-1 \leq x \leq 4$$

You Try! Write a compound inequality for the given graph.



$$-3 < x \leq 2$$

(The above inequality is underlined with a blue wavy line.)